

Quick Installation Guide

Network Video Recorder



Model: FN3109H / FN3104H

If you need QIG in other languages (eg. **Nederlands, Deutsch, Français, Español**), manuals, tools, ect. Please visit <http://www.foscam.com> > Support > Download Center.

V1.5.1
EQ310413

1 Before You Start

Package Contents

NVR	Ethernet Cable
DC Power Adapter	USB Mouse
Quick Installation Guide	Screw Pack
Warranty Card	CD
Data Wire and Power Wire of the Hard Drives	

Security Warning

- Foscam cameras and NVRs require good security practices to safeguard your privacy. You should regularly change your camera or NVR password which is the combination of numbers, letters and symbols.
- You should update your camera or NVR regularly. Make sure your camera or NVR has the latest firmware installed for your specific model and better experience.

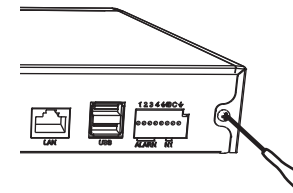
-1-

2 Hard Disk Installation

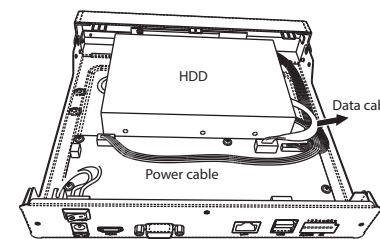
WARNING

- Before installing a hard disk drive (HDD), please make sure the power is disconnected from the NVR.
- Find the antistatic gloves from the package of the NVR and wear the gloves.
- It is recommended that a hard drive be used in 7200 high-speed or above.

- Remove the cover from the NVR by unfastening the screws on the rear and side.

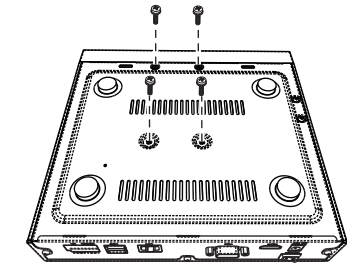


- Connect one end of the data cable and power cable to the motherboard of NVR and the other end to the HDD.

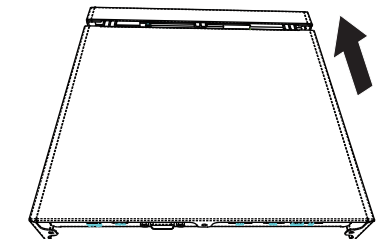


-2-

- Place the HDD on the bottom of the device and then fasten the screws on the bottom to fix the HDD.

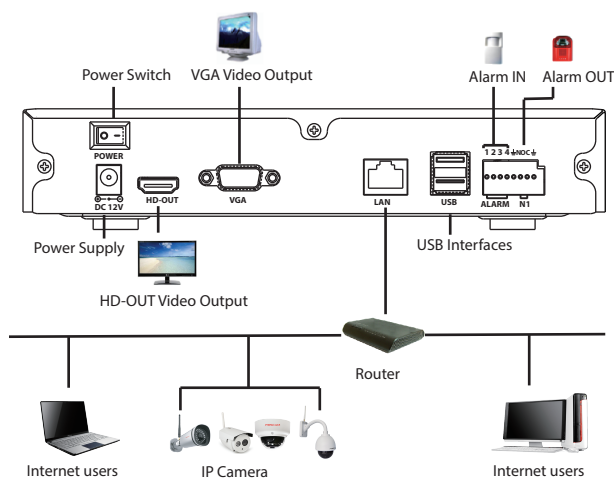


- Re-install the cover of the NVR and fasten screws.



-3-

3 Device Connection



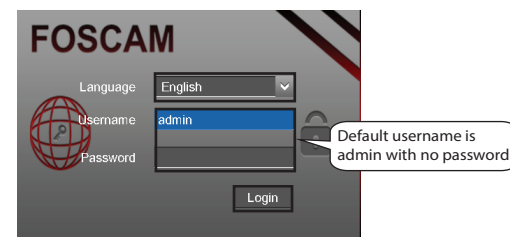
Procedure

- Connect your display to one of the video outputs (VGA or HD-OUT interface).
- Connect an external storage device to the USB interface of the NVR as a backup.
- Connect a mouse to the USB interface.
- Connect an alarm input device to alarm input interface and connect an alarm output device to alarm output interface respectively.
- Some devices need to connect to your router using an Ethernet cable, including the NVR, PC and IP Camera.
- Connect the power adapter to the power input port.

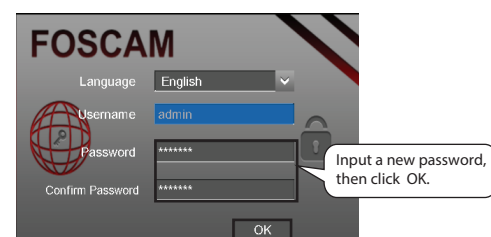
-4-

4 Log In

- Turn on the power switch on the rear panel. After the NVR starts up successfully, the power LED and HDD LED indicators will turn green. The startup page is displayed on the screen.
- Login page. Select the Language, Enter the **Username** and **Password**, then click on the **Login** button.



- For the initial log in, the system will prompt you to change your password. Once done, click the **OK** button.



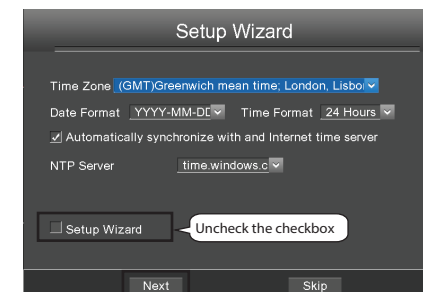
- After modifying the password, you will be taken to the **Setup Wizard**.

-5-

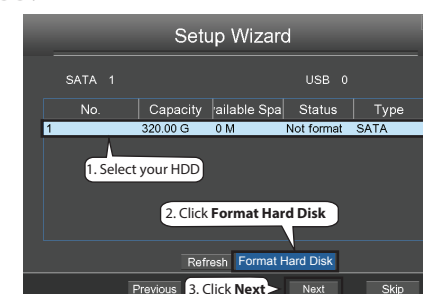
5 Setup Wizard

The Setup Wizard can walk you through some important settings on the NVR.

- Setting the time. If you don't want to use the Setup Wizard next time, uncheck the **Setup Wizard** checkbox. Click the **Next** button.



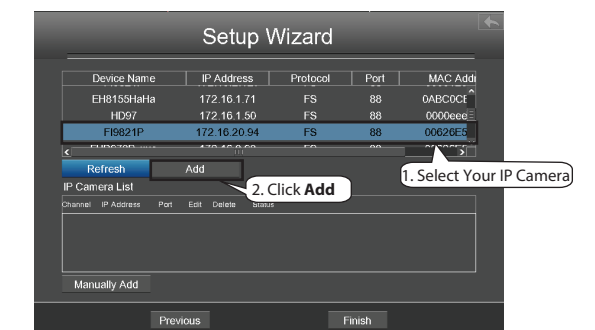
- Select the HDD you would like to use, then click the **Format Hard Disk** button to set up the HDD. Note that this will delete all files on the HDD.



-6-

Note

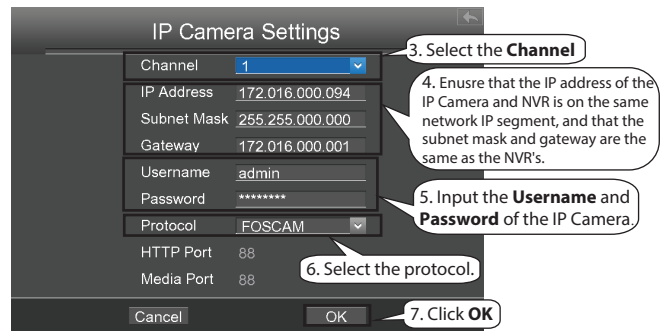
- It is recommended to use SATA type of hard disk for recording.
- You can add an IP Camera that is connected to the internet on the NVR.



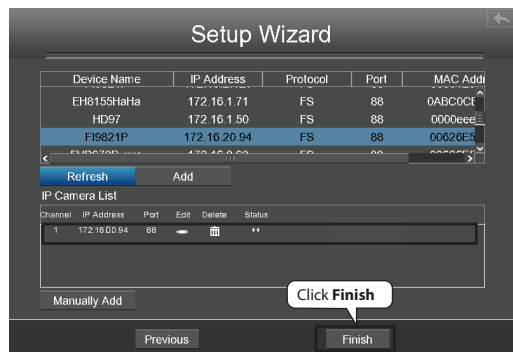
You can configure the following information for your IP Camera.

- Select a protocol depending on which IP Camera you have.
- FOSCAM protocol: The High Definition (HD) IP Cameras for Foscam.
 - MJ protocol: The Standard Definition (SD) IP Cameras for Foscam.
 - ONVIF protocol: IP Cameras which support ONVIF protocol.

-7-



4. Repeat the step3 to add multiple IP Cameras. Find your IP Camera in the **IP Camera List**, then click the **Finish** button to complete the setup wizard.



The live view interface will show you the video feed of each IP Camera.

6 Manual Recording

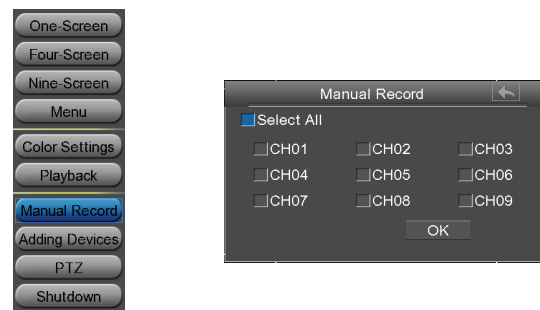
After the IP Camera is added successfully to the NVR, there are two ways to enable manual recording functionality when in the Live View mode.

Method 1

Left click the mouse in the channel, and some buttons will pop up as shown . Click the button to enable recording.

Method 2

- Right click the mouse in the Live View mode, and a shortcut menu will pop up.
- Select the **Manual Record** to enter the **Manual Record** page.
- Check the channels for which you want to enable recording. Click the **OK** button.
- Then click the icon to exit the interface.



In the Live View mode, the icon is at the bottom right of the screen for each channel, indicating recording is on going.

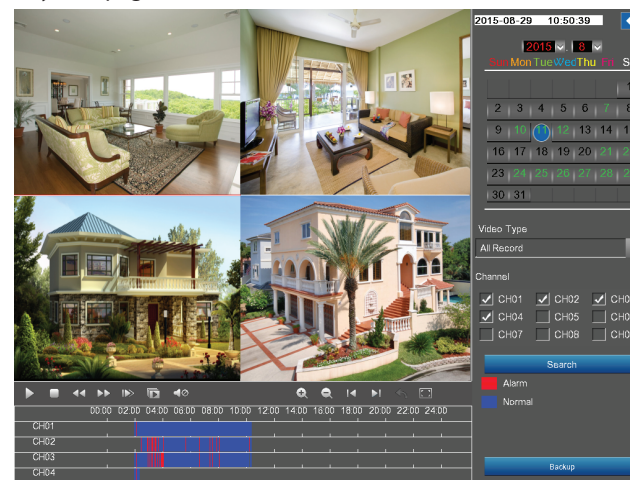
Note

To disable recording, click again the button in the channel, or uncheck the **channel** checkbox on the **Manual Record** interface.

7 Playback

You can see the recording information, include Manual Record, Alarm Record, Schedule Record.

- Right click the mouse in the Live View mode, and a shortcut menu will pop up.
- Select the **Playback** to enter the **Playback** page.
- Select the time and Video Type of the recording. Check the Channels, and you can check up to four channels.
- Click the **Search** button. Then you can see the recording video in the Playback page.



Note

The maximum number of 4 playback video channels have been reached, please deselect other channels first to continue.

8 Remote Access

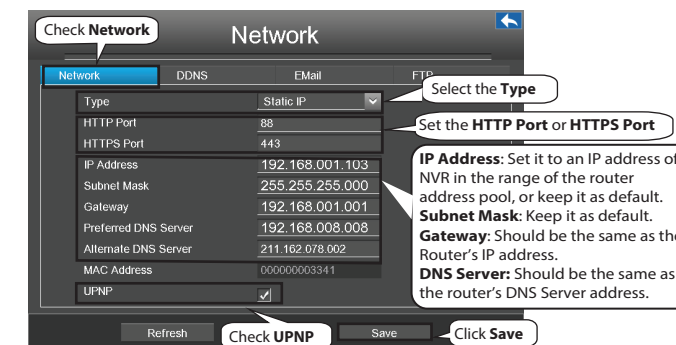
You can also access the NVR or IP Camera directly through the local network and remotely via manual port forwarding.

Note

This product supports 32-bit IE8 or later versions and does not support 64-bit IE browsers. It also supports Apple Safari and Mozilla Firefox browsers.

8.1 Network Configuration

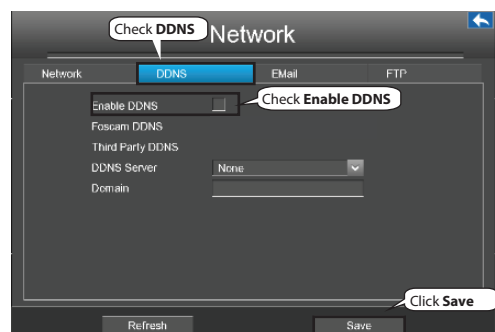
- Configure network information. Right click the mouse in the Live View mode, choose **Menu > Settings > Network**. Check the **Network** checkbox, then configure the network information of the NVR.



It is highly recommended to set the port range from 5000 to 65535, and the value of the port for each device should be unique.

2. Configure the DDNS.

Right click the mouse in the Live View mode, choose **Menu > Settings > Network**. Check the **DDNS** checkbox. Enable DDNS on the NVR. We recommend you to use the DDNS by default.



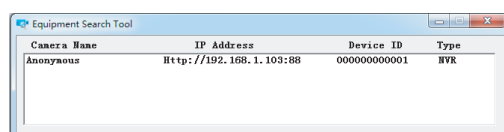
8.2 Access to the NVR in LAN

You can access to the NVR via the browser in LAN.

Open the "Equipment Search Tool" in the resource CD. It will display information of the NVR on your LAN.



Double click the NVR in the list, and your default browser will open up to the login page.



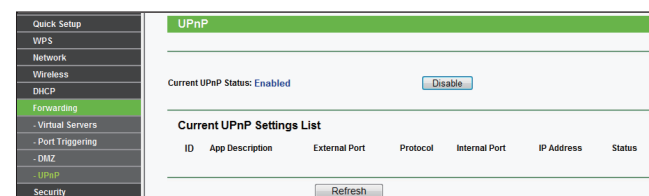
8.3 Access to the NVR in WAN

If UPnP has been **enabled** in the router, you do not need to perform the following steps.

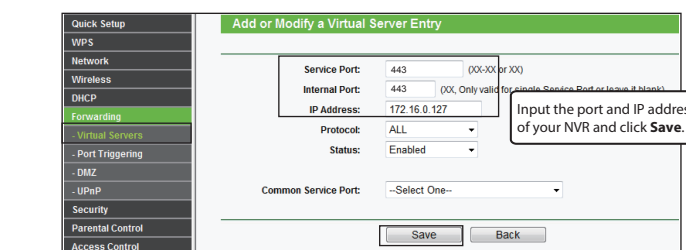
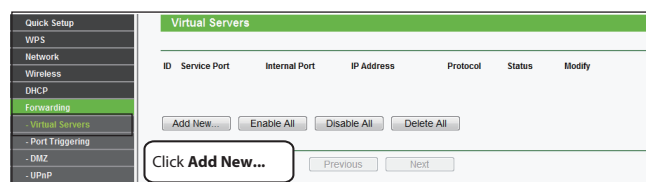
If UPnP is **disabled**, you need to select one of the following methods to configure port forwarding on your router.

For these steps, we will be using the TP-LINK brand wireless router as an example.

- If there is a UPnP function in your router. Choose **Forwarding > UPnP**, make sure that the **Current UPnP Status** is **Enabled**.



- If there is no UPnP function in your router: You need to manually add port forwarding, refer to the following steps. You need go to the **Forwarding > Virtual Servers** panel for setup.



Now you can access to your NVR using the DDNS address, such as **https://domain name:HTTPS port**. As an example: **https://a6747.myfoscam.org:443**

9 Technical Support

If you have problems with your Foscam device, please contact the Foscam reseller you purchased from, or you can e-mail the Foscam headquarter technical support team: **tech@foscam.com**

Your valuable comments and suggestions on improving Foscam products are welcomed!



CE Certificate Website:
<http://www.foscam.com/company/ce-certificate.html>

www.foscam.com